

Boating Guide Karratha - Dampier Marine Safety



March 2017

Contact details

Department of Transport
Karratha: 91596920
website: www.transport.wa.gov.au/imarine
Marine Safety Hotline: 13 11 56

Department of Fisheries
Karratha: 9144 4337
Fishwatch: 1800 815 507
website: www.wa.gov.au/fisheries

Police
Karratha: 9143 7200
Dampier: 9183 1144
Wickham: 9187 1444
Water Police: 9442 8600

Customs
Dampier: 9144 3500
Customs Hotline: 1800 06 1800

Marine Sea Search and Rescue
Port Walcott: 0439 870 995
West Pilbara: 0417 932 023
VHF Emergency: Ch.16

Sea Rescue
West Pilbara "VMR685": Ch.16
Wickham "VMR 689": Ch.16 + 81

Department of Parks and Wildlife
Karratha: 9182 2000
website: www.dpaw.wa.gov.au

Port Authority
Dampier Port Authority: 9159 6555

Hospitals
Karratha (Nickol Bay): 9143 2333
Roebourne: 9182 0200

Shire of Roebourne
Karratha: 9186 8555
Ranger: 9186 8555

For further information go to
www.transport.wa.gov.au/boatingguides or scan the QR Code









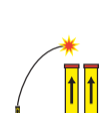


Join us at
facebook.com/MarineSafetyWA

The information contained in this publication is provided in good faith and believed to be accurate at time of publication. The State shall in no way be liable for any loss sustained or incurred by anyone relying on the information.

Safety Equipment

Protected Waters lakes, rivers, inlets and estuaries except Lake Argyle	0-2 Nautical Miles from the mainland shore	2-5 Nautical Miles from the mainland shore	Over 5 Nautical Miles from the mainland shore
--	---	---	--

	Protected Waters lakes, rivers, inlets and estuaries except Lake Argyle	0-2 Nautical Miles from the mainland shore	2-5 Nautical Miles from the mainland shore	Over 5 Nautical Miles from the mainland shore
 Recreational Skipper's Ticket The skipper of a recreational vessel, powered by a motor greater than 6hp (4.5kw) must hold an RST.	✓	✓	✓	✓
 Bilge Pump/Bailer All vessels must carry a bilge pump. Vessels under 7 metres may carry a bailer in lieu of a bilge pump.	✓	✓	✓	✓
 Fire Extinguisher Vessels with an inboard engine or carrying hydrocarbon heating or cooling appliances must carry an approved fire extinguisher.	✓	✓	✓	✓
 Anchor and Line An efficient anchor and line must be carried.	—	✓	✓	✓
 Lifejacket A lifejacket bearing the label Level 100 (or higher) with the Australian Standard AS 1512, AS 4758 or ISO 12402 must be carried for every person onboard.	—	✓	✓	✓
 Red and Orange Flares (in date) At least two hand held red flares and two hand held orange flares must be carried. Two parachute flares may be carried in lieu of the two hand held red flares and a smoke canister may be carried in lieu of the smoke flares.	—	✓	✓	✓
 EPIRB (in date) A 406 MHz EPIRB registered with AMSA bearing the standard AS/NZS 4280.1 must be carried if proceeding more than 2 miles from the mainland shore or more than 400 metres from an island located more than 2 miles from the mainland shore.	—	—	✓	✓
 Parachute Flares (in date) A minimum of two parachute flares must be carried if operating more than 5 miles from the mainland shore or more than 1 mile from an island located more than 5 miles from the mainland shore.	—	—	—	✓
 Marine Radio A marine radio must be carried if operating more than 5 miles from the mainland shore or more than 1 mile from an island located more than 5 miles from the mainland shore. The radio can be 27 MHz, VHF or HF.	—	—	—	✓

RSE-0317

Personal water craft

A personal water craft (PWC) – often called a jet ski – is a craft propelled by an inboard motor powering a water jet pump. The operator sits, stands or kneels and uses handlebars to steer it.

A person must be at least 16 years of age and hold a Recreational Skipper's Ticket (RST) to operate a PWC at a speed in excess of 8 knots.

People aged 14 to 16 years and holding an RST may operate any recreational vessel during daylight hours under a speed of 8 knots.

PWCs and similar craft are powerboats as far as the rules are concerned. This means there are rules on the age of drivers, the distance offshore they can operate, safety equipment to be carried, speed limits and so on. There are, however, a few extra rules and a few concessions which bear in mind the PWC's limitations.

Safety equipment

Every person on board a PWC must wear a lifejacket at all times:

- within 400 metres of the shore it can be a Level 150, 100, 50, 50s;
- between 400 metres and 2 nautical miles from shore in unprotected waters a lifejacket Level 150 or 100 must be worn. An indiate, inshore distress flare kit, must be carried;
- between 2 and 5 nautical miles, a Level 150 or 100 must be worn. An indiate, inshore distress flare kit and EPIRB, must also be carried; and

Vessels under 3.75 metres are not permitted more than 5 nautical miles offshore.

Freestyling, wake and wave jumping

Freestyling is driving a PWC in such a way that the driver of another vessel would be unable to predict its course and speed in order to avoid a collision.

Wave and wake jumping is driving a PWC over a wave or swell with the aim of becoming airborne. The wave or the swell may be formed naturally or by the passage of a vessel.

Freestyling and wake jumping is prohibited:

- within any speed restricted area;
- within 30 metres of another PWC; and
- within 50 metres of another vessel or person in the water.

Water skiing

Water skiing within Hampton Harbour is only permitted within the gazetted water ski area.

The person in charge of a vessel engaged in water skiing must be at least 17 years old. There must also be an observer on board, who is at least 14 years old, who constantly watches the skier.

A boat landing a skier has right of way over a boat taking-off. Vessels must not travel any closer than 50 metres behind another vessel towing a skier.

Trick skiing is prohibited within 100 metres of a take-off and landing area.

Vessels towing a skier must remain at least 50 metres or as gazetted from the shore except when taking-off or landing a skier.

Diving regulations

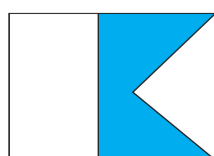
Diving flag

A vessel with divers working from it must carry the appropriate day or night signals. The daytime signal for divers is an International Code Flag "A". The flag must be at least 750mm long and 600mm wide. Divers operating without a vessel, for example from a jetty, must also display the International Code Flag "A" of the same minimum size.

The flag can be shown from a buoy, in which case the minimum size must be 300mm in length and 200mm in width. The flag must be clearly visible to all vessels operating in the vicinity.

At night the diver's vessel, as well as appropriate lights such as an anchor light, must show three all-round lights in a vertical line: the top and bottom lights red; the middle one white.

People night diving without a vessel must display a yellow-orange flashing light that can be seen from a minimum distance of 200 metres.



International Code flag "A"

Vessels to keep clear of diving signals

All vessels must keep at least 50 metres clear of boats, buoys or areas showing diving signals.

Where it is not possible to keep 50 metres clear, the approaching vessel should travel at the slowest possible speed and keep a good lookout for people in the water.

Handy local information

Tidal movements in the West Pilbara are very large. Tidal movements should be considered when planning a boating trip in the area.

Tidal movements restrict the use of the Karratha Back Beach boat ramp. The ramp requires a tidal depth of at least 2.4 metres for most vessels.

Most islands in the Dampier Archipelago are nature reserves and have access zonings. These zonings are shown on the map. Dogs are not permitted on the reserves. For further information relating to the island reserves please contact the Department of Parks and Wildlife on (08) 9182 2000.

Did you know that there are two recognised dive sites in the West Pilbara. The first is east of Delambre Island and the other is near Bare Rock.

Interstate ticket and boat registration valid for three months

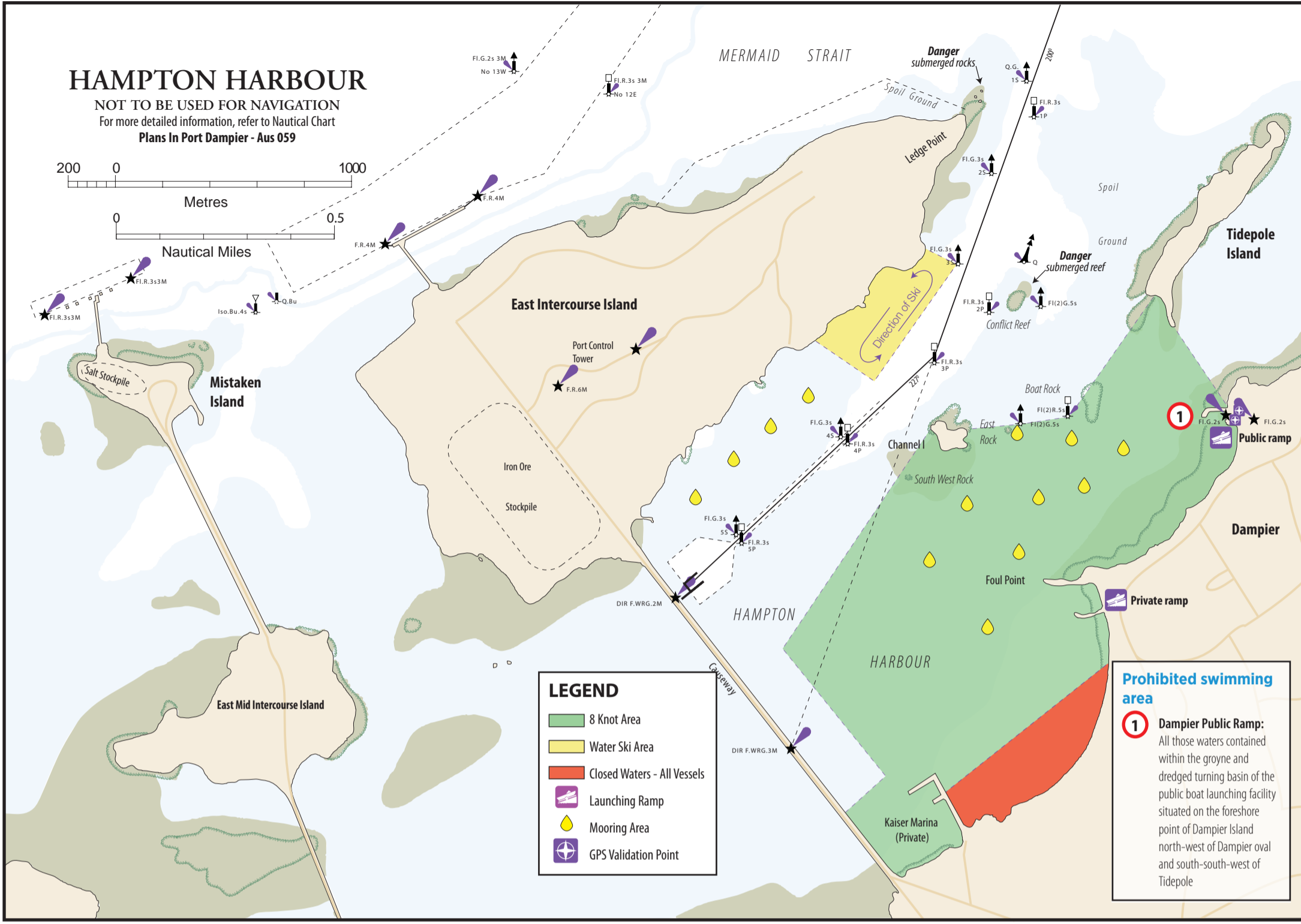
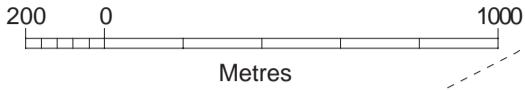
Any skipper operating a recreational vessel, powered by a motor greater than 6 hp in WA must hold a WA Recreational Skipper's Ticket (RST) or interstate or overseas equivalent.

If you hold a valid/current interstate ticket, recognised by DoT and you enter, as a visitor or with the intention of permanently residing in the State, it will be taken that you hold a RST until three months have elapsed since you entered the State. After that period you must apply for an RST, if you wish to continue operating an RST vessel in this State.

If your boat is currently registered in another State, you have three months grace after bringing it into WA. Recreational boats brought into WA from the NT have 30 days after bringing it into WA. After that time, you must register it in this State.

HAMPTON HARBOUR

NOT TO BE USED FOR NAVIGATION
For more detailed information, refer to Nautical Chart
Plans In Port Dampier - Aus 059



LEGEND

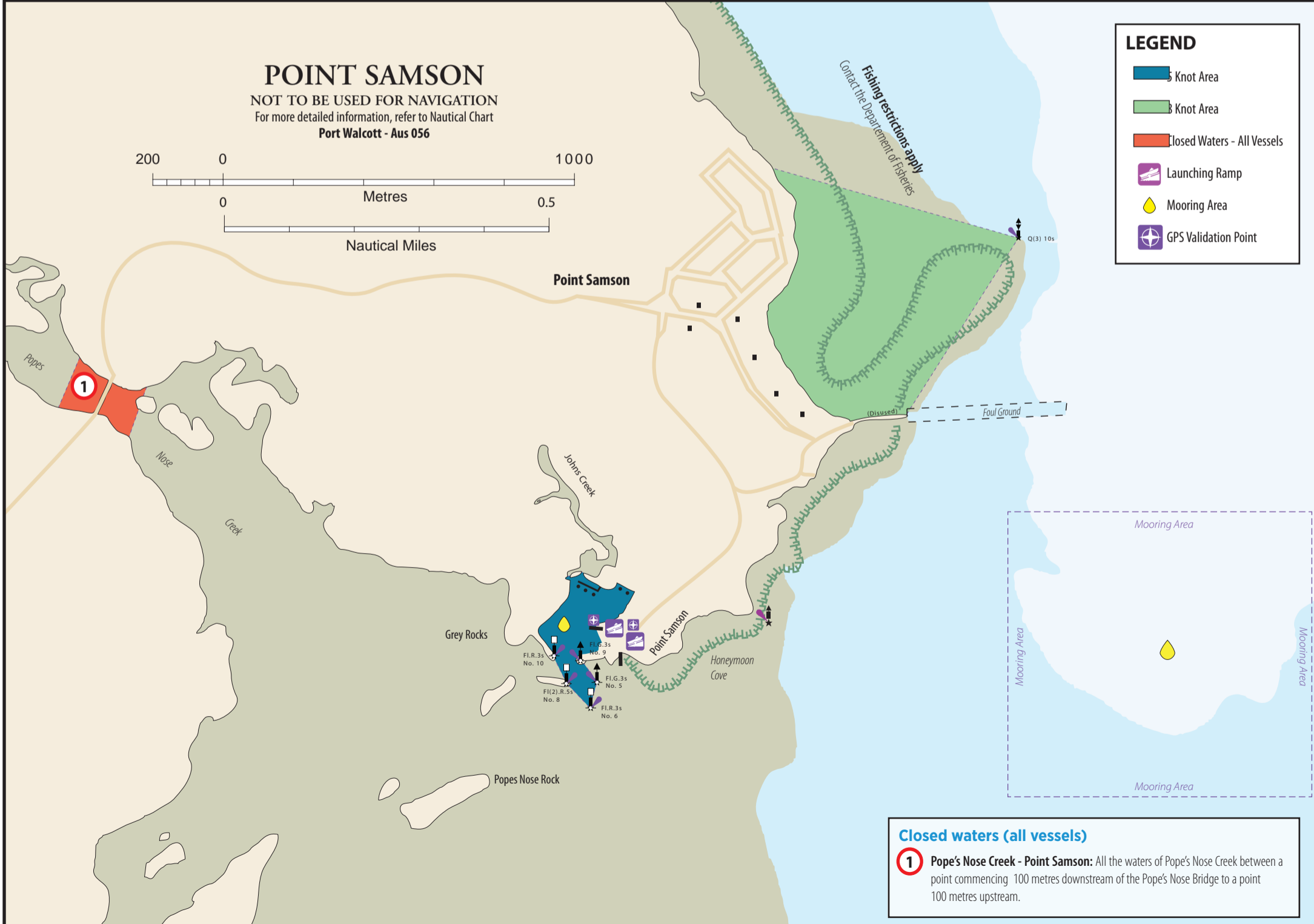
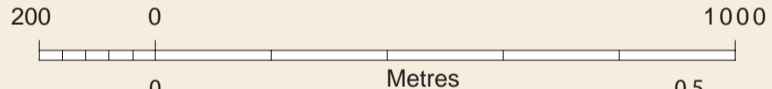
- 8 Knot Area
- Water Ski Area
- Closed Waters - All Vessels
- Launching Ramp
- Mooring Area
- GPS Validation Point

Prohibited swimming area

1 **Dampier Public Ramp:** All those waters contained within the groyne and dredged turning basin of the public boat launching facility situated on the foreshore point of Dampier Island north-west of Dampier oval and south-south-west of Tidepole

POINT SAMSON

NOT TO BE USED FOR NAVIGATION
For more detailed information, refer to Nautical Chart
Port Walcott - Aus 056



LEGEND

- 5 Knot Area
- 8 Knot Area
- Closed Waters - All Vessels
- Launching Ramp
- Mooring Area
- GPS Validation Point

Closed waters (all vessels)

1 **Popes Nose Creek - Point Samson:** All the waters of Popes Nose Creek between a point commencing 100 metres downstream of the Popes Nose Bridge to a point 100 metres upstream.

DAMPIER ARCHIPELAGO

NOT TO BE USED FOR NAVIGATION

For more detailed information, refer to the Australian Hydrographic Nautical Charts
 Aus 55 – Approaches to Port Walcott
 Aus 56 – Port Walcott
 Aus 57 – Dampier Archipelago
 Aus 58 – Port of Dampier
 Aus 59 – Plans in Port Dampier, Withnell Bay to King Bay, Dampier Wharves

LEGEND

- Port Security Zones - No Access
- Fishing Restrictions - Contact Department of Fisheries
- Shallow Water (0-5 metres at low tide)
- Intertidal Areas - (dry at low tide)
- Saline Flats
- Mangroves
- Closed Waters - Motorised Vessels
- Reef
- Offshore Rocks
- Mooring Areas
- Launching Ramps
- Approximately 2 nm from mainland shore
- Approximately 5 nm from mainland shore
- Access Zoning for Island Reserves - Department of Parks and Wildlife.**
- Special Conservation Zone - No access at any time.
- Conservation Zone - Day access only
- Recreation Zone - Day trip and camping areas. (camping permitted only up to 100m inland of the high-water mark)
- Conservation & Recreation Reserves - Day trip and camping areas.

WARNING! — Crocodiles

Crocodiles inhabit Pilbara coastal waterways so please exercise caution when launching boats and do not clean fish at the waters edge. Immediately report all crocodile sightings to DPaW on (08) 9182 2000

WARNING! — Tides

There is a 5m tidal range. Consideration to tidal movements should be given when planning a boating trip in the area.

Notice to Mariners

Before undertaking any boating activities please check the Department of Transport's chart updates and Temporary Notices to Mariners list www.transport.wa.gov.au/marine/19101.asp

Cardinal Marks
Keep NORTH of uninterrupted quick flashes

Keep WEST of 9 flashes in a group
Keep EAST of 3 flashes in a group
Keep SOUTH of 6 flashes + 1 long flash in a group

Isolated Danger Marks
indicate a small area of danger.

LIGHT: White light, group of 2 flashes.

Special Marks
indicate a special area such as aquaculture or feature such as traffic separation scheme.

Lateral Marks
indicate the port and starboard sides of a navigable channel.

Port Marks
Light: Red, any rhythm.

Starboard Marks
Light: Green, any rhythm.

Stay on the starboard side of the channel.

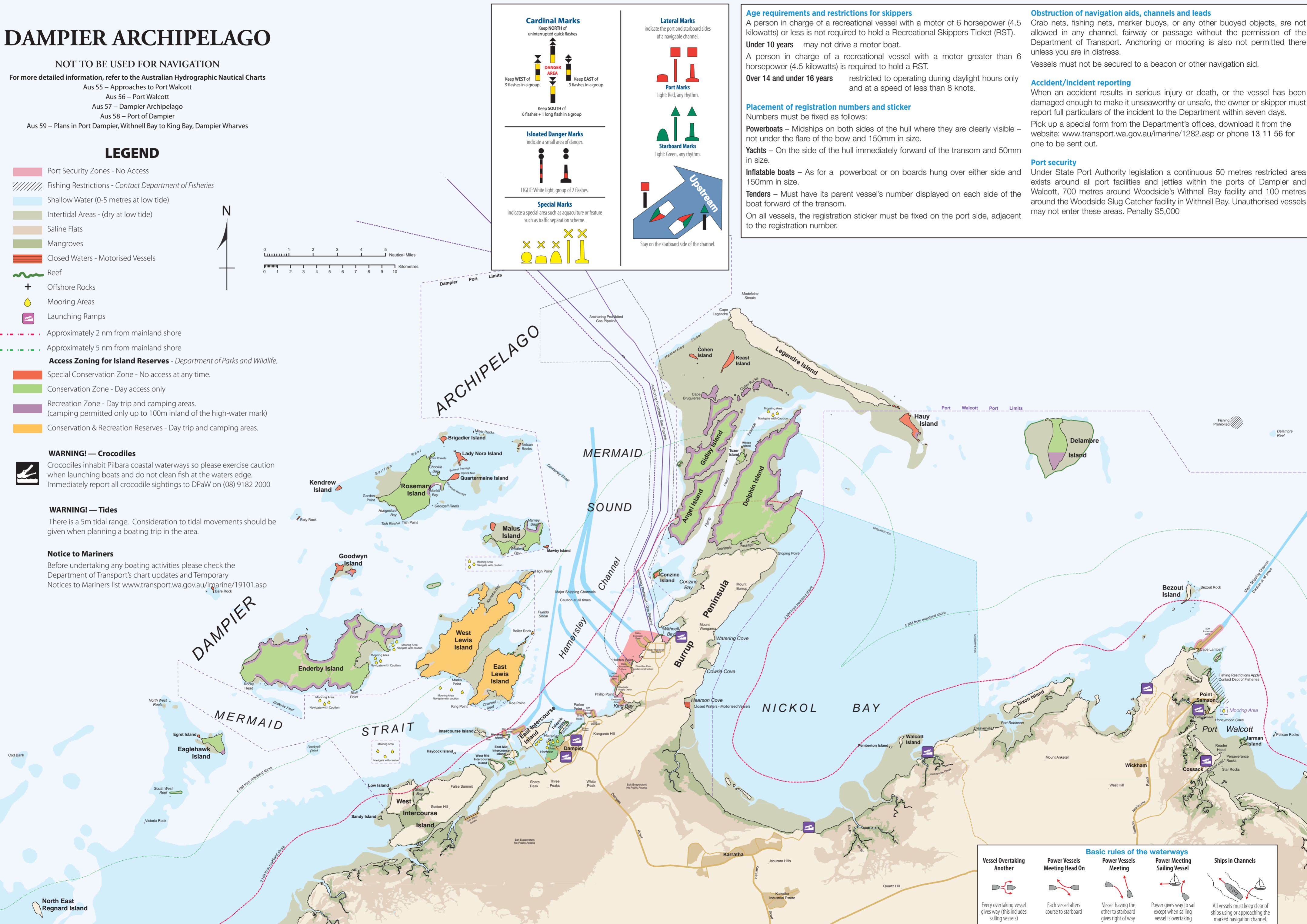
Age requirements and restrictions for skippers
 A person in charge of a recreational vessel with a motor of 6 horsepower (4.5 kilowatts) or less is not required to hold a Recreational Skippers Ticket (RST).
Under 10 years may not drive a motor boat.
 A person in charge of a recreational vessel with a motor greater than 6 horsepower (4.5 kilowatts) is required to hold a RST.
Over 14 and under 16 years restricted to operating during daylight hours only and at a speed of less than 8 knots.

Placement of registration numbers and sticker
 Numbers must be fixed as follows:
Powerboats – Midships on both sides of the hull where they are clearly visible – not under the flare of the bow and 150mm in size.
Yachts – On the side of the hull immediately forward of the transom and 50mm in size.
Inflatable boats – As for a powerboat or on boards hung over either side and 150mm in size.
Tenders – Must have its parent vessel's number displayed on each side of the boat forward of the transom.
 On all vessels, the registration sticker must be fixed on the port side, adjacent to the registration number.

Obstruction of navigation aids, channels and leads
 Crab nets, fishing nets, marker buoys, or any other buoyed objects, are not allowed in any channel, fairway or passage without the permission of the Department of Transport. Anchoring or mooring is also not permitted there unless you are in distress.
 Vessels must not be secured to a beacon or other navigation aid.

Accident/incident reporting
 When an accident results in serious injury or death, or the vessel has been damaged enough to make it unseaworthy or unsafe, the owner or skipper must report full particulars of the incident to the Department within seven days.
 Pick up a special form from the Department's offices, download it from the website: www.transport.wa.gov.au/marine/1282.asp or phone 13 11 56 for one to be sent out.

Port security
 Under State Port Authority legislation a continuous 50 metres restricted area exists around all port facilities and jetties within the ports of Dampier and Walcott, 700 metres around Woodside's Withnell Bay facility and 100 metres around the Woodside Slug Catcher facility in Withnell Bay. Unauthorised vessels may not enter these areas. Penalty \$5,000



Basic rules of the waterways

Vessel Overtaking Another 	Power Vessels Meeting Head On 	Power Vessels Meeting 	Power Meeting Sailing Vessel 	Ships in Channels
Every overtaking vessel gives way (this includes sailing vessels)	Each vessel alters course to starboard	Vessel having the other to starboard gives right of way	Power gives way to sail except when sailing vessel is overtaking	All vessels must keep clear of ships using or approaching the marked navigation channel.